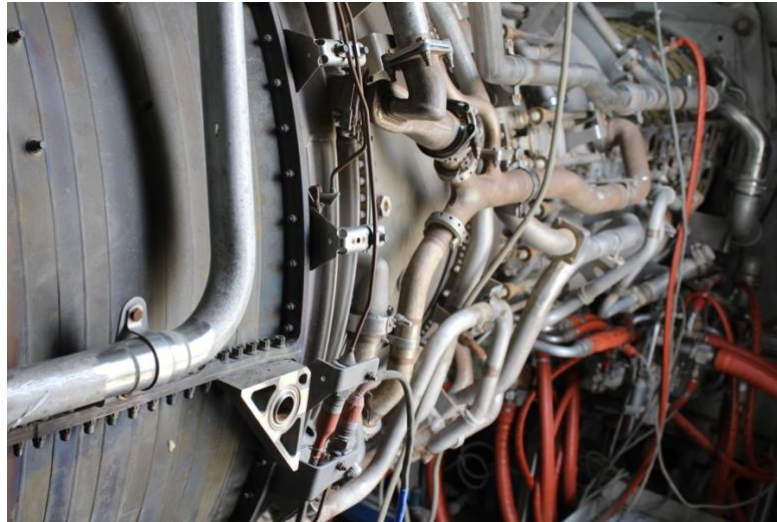




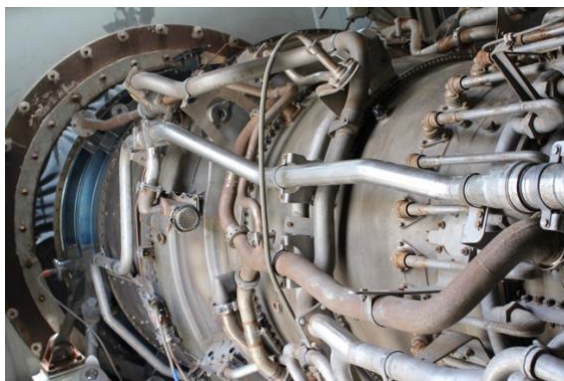
CESS REF: GTMM9815

## 2 x 23MW GE LM2500 PE Gas Turbine



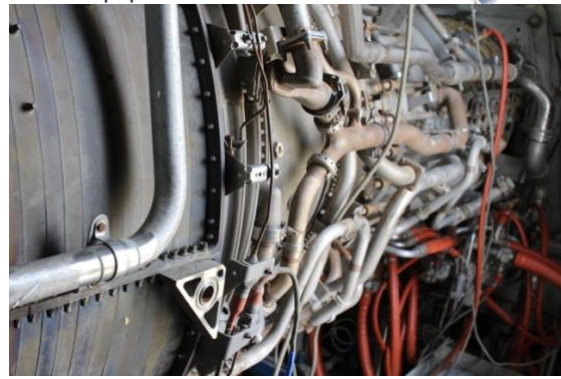
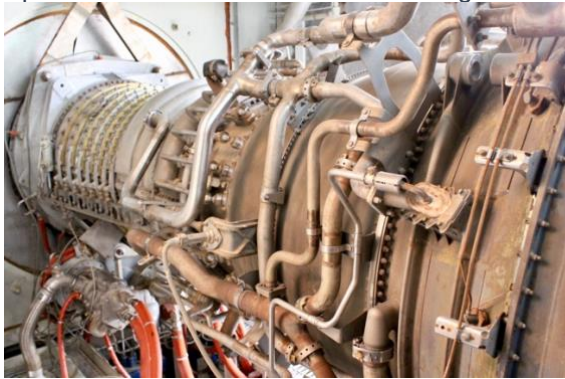
### 2 x GE LM2500 Gas Turbine

Gas Turbine Manufacturer	:	GE
Engine Model	:	7LM2500-PE-MLG04
Fuel	:	Liquid
Site Rated Capacity	:	23,000kW
Speed	:	3,600/3,000 RPM
Frequency	:	60 Hz
Year of Manufacture	:	1988
Hours of Operation	:	900 – 4500 hours
Lube Oil	:	MIL-L-23699



# Craigie Engineering Sales & Services Ltd

Specialists in the Valuation & Marketing of Power Plant Equipment.



## June 2017 Borescope Inspection



HPC Stage 12 Leading Edge – Clean



HPT Stage 2 Rotor – Clean

- All units are currently decommissioned and stored in acoustic enclosures
- One core engine has been sold with 2 remaining
- Core engines are available for sale individually packaged & FOB
- 3 x Brush 23MVA 60 Hz 13.8kV air cooled generators also for sale; further inspection is required to determine serviceability.



[Enquire here](#)